

Brill Formulation™

Release Notes – Revision 01/2023

Important Notices

- Activation via Email is no longer available and has been replaced with an activation web site. Refer to the latest revision of the file 'Brill Formulation Manual Activation Rev xxxxx.pdf' for detailed instructions on activating or updating your license when the automatic internet procedure does not work. Copies of the updated pdf will be installed in the Formulation installation folder or can be downloaded from the download site.
- **You will need a new license file if upgrading from Brill 2.8 or older prior to upgrading to Brill Formulation™ 2.9.** To request a new license file, send an email to the following address: fs-support@datacor.com.
NOTE: Format Solutions is committed to making the installation process as quick and easy as possible; however, we recommend that you request a new license file a day or two prior to your planned installation, if possible. ***If you are not comfortable completing the upgrade on your own, please contact your account manager to arrange a consulting engagement – they will work with you to expedite your upgrade.***
- Brill Formulation™ 2.9 requires .NET framework 4.8
- Hardware and/or software requirements may have changed from the previous release. ***Review the latest hardware and software requirements for Brill Formulation™*** (available from your Format Solutions support specialist).
Tips:
 - The latest Brill Formulation™ Hardware and Software Requirements document contains a complete list of hardware and software requirements (available from your Format Solutions support specialist – to contact support visit our [customer support website](#)).
 - The .NET Framework 4.8 must be installed prior to installing Brill Formulation™ 2.9.

Customer Service

- If you need assistance, you can contact customer services in one of the following ways:
 - Program operation, licensing, and training Email: fs-support@datacor.com.
Website: <https://www.formatsolutions.com/support>
 - Software download portal: <https://download.formatsolutions.com/> (login required)
- Phone: 44 1483 906303 (UK) or
1-800-701-5794 or 1-952-984-4700 (select option 3 for the Support Team) (USA)



Version Reference

Current Version:

- [2.09.001 – Released January 2023](#)

Previous Versions:

- [2.08.005 – Released May 2022](#)
- [2.08.004 – Released March 2020](#)
- [2.08.003 – Released April 2019](#)



Current Version

Brill Formulation™ 2.9 (v2.09.001 – 01/2023)

Maintenance Enhancements

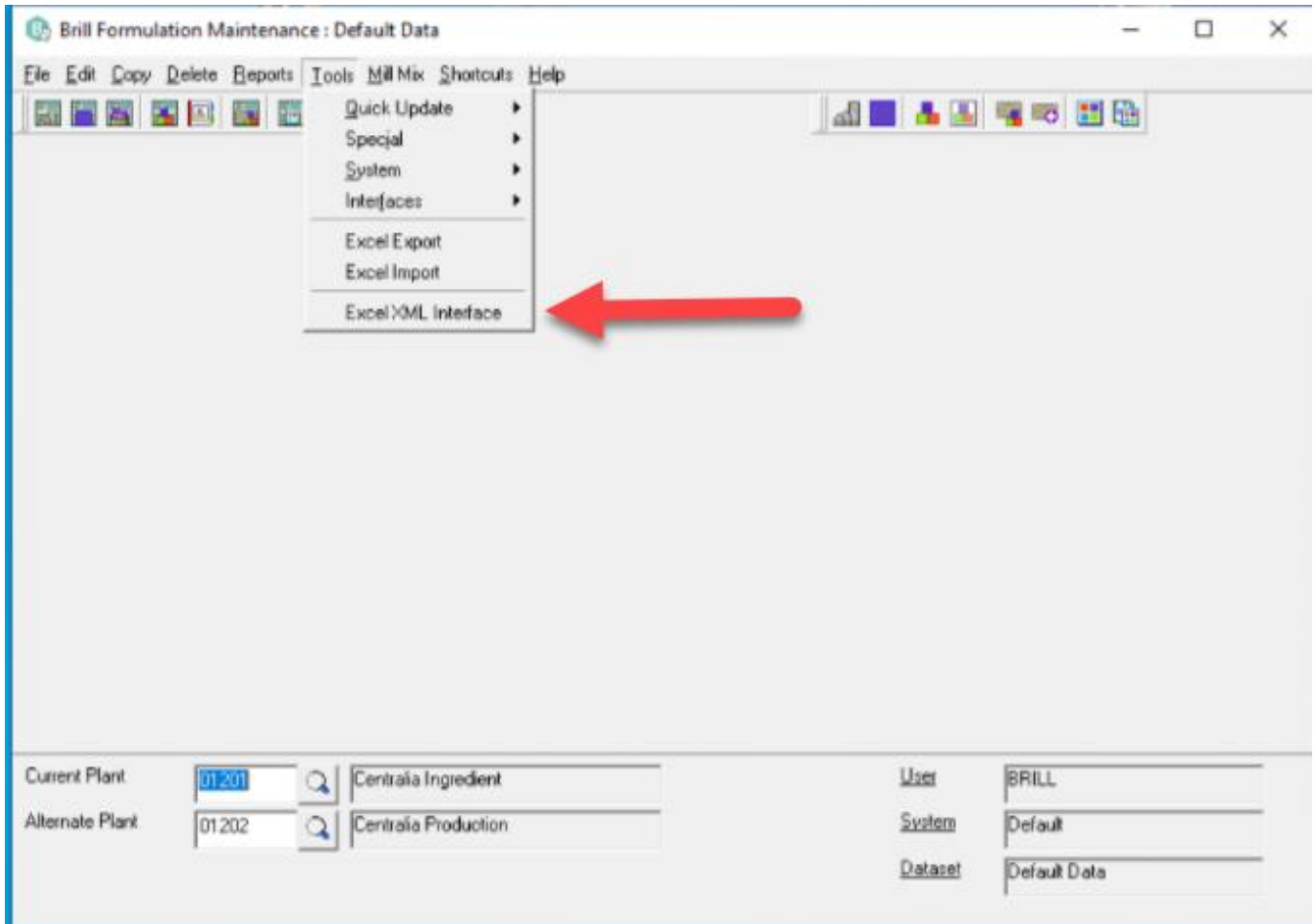
Interfaces

- **A new Excel XML interface has been added to Brill.**

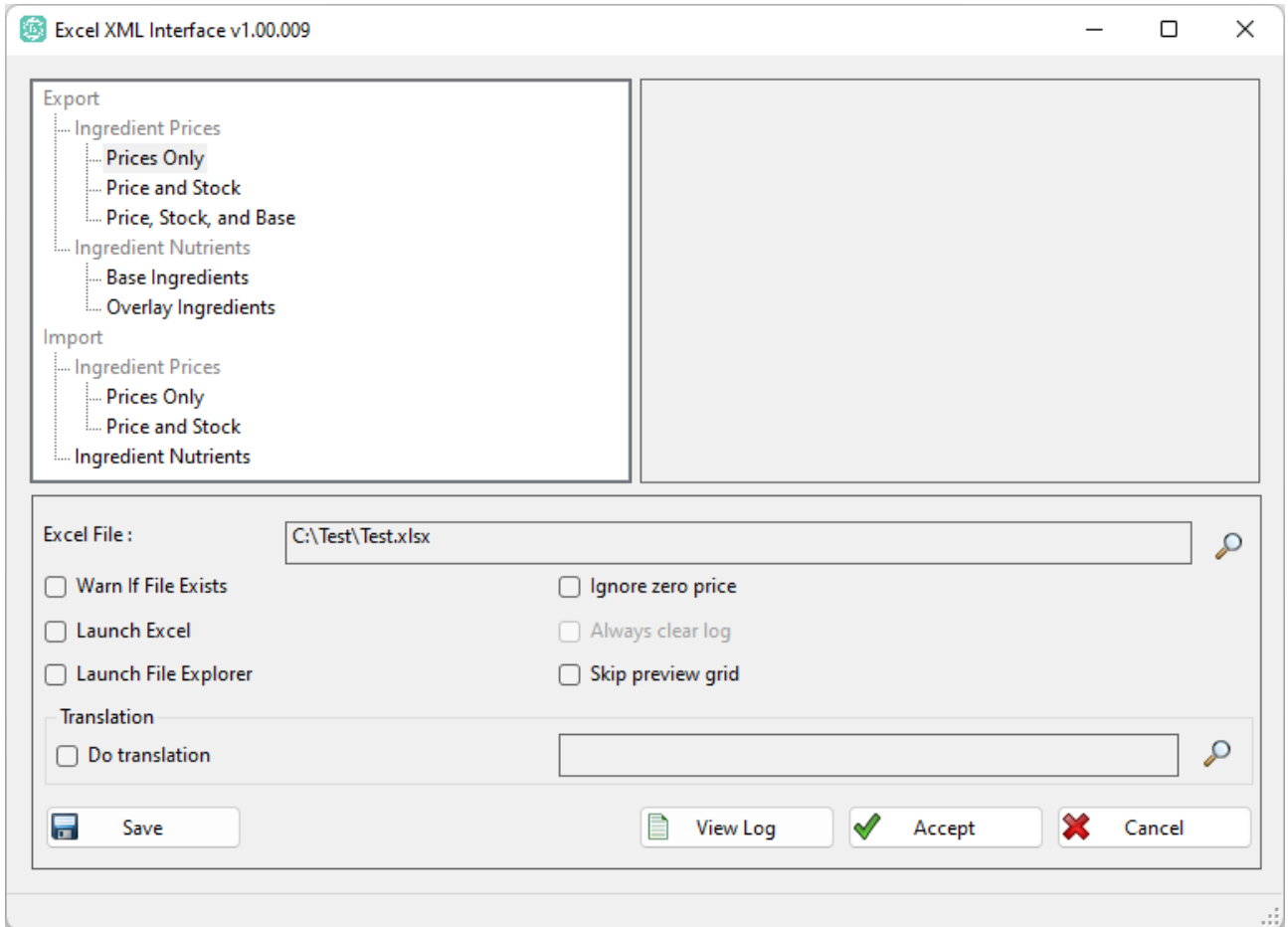
This interface does not require office installation on the machine running the import or export. The Excel file is generated in the Excel XML .xlsx format and allows the user to use their Excel online account or copy back to their local version of Excel when working with the worksheet. The layout of the data is in the grid format which allows users to use the data in Excel filtering, graphing or manipulate the data using Excel formulas.

This menu option is controlled in foundation utilities security, along with all other menu options.

The existing Excel import and export remains the same.



Excel XML Interface screen



Export/Import options.

Items grayed out are not available for selection, they provide structure for the menu selections. Items in darker type are available for selecting.

Exports available:

Prices

- Prices Only – Allows user to export only the prices associated with ingredients.
- Price and Stock – Allows user to export the price and stock status associated with ingredients.
- Price, Stock and Base – Allows user to export the cost, stock status and the base price of the ingredients. This is used when the user is using price add on in the system.

Ingredient Nutrients

- Base ingredients – Used to export base ingredient nutrients.
- Overlay ingredients – Used to export overlay ingredient nutrients.

Imports available

- Prices Only – Allows user to import the prices associated with ingredients.
- Price and Stock – Allows user to import the price and stock status associated with ingredients.
- Ingredient Nutrients – Allows user to import the associated nutrients for ingredients. The nutrients are merged into the ingredient if there is not an associated nutrient in the import the nutrient value remains the same for the ingredient.

Note to import Base Ingredient information leave the Plant Code blank.

Excel XML Interface Options:

- Excel File – User enters the file to process for Export or Import.
- Warn if File Exists – User is warned if the file entered for Export already exists at the location specified.
- Launch Excel – File specified in export is automatically opened in Excel or equivalent program for opening files with .xlsx extensions.
- Launch File Explorer – Windows File Explorer is launched opening the folder specified in the Excel file export.
- Ignore zero price – When exporting data, the ingredients with zero prices are not exported.
- Always clear log – When checked the log file is cleared when export or import are executed.
- Skip preview grid – When importing or exporting data the preview grid is skipped data is exported or imported and the options checked are executed.

Translation

Do Translation – Allows user to specify the translation file(s) used when exporting or importing data. The translation file names follow the Brill standard for translations. The files are grouped by file name with each file extension supporting the type of translation needed.

Translation files:

- Format Brill code, External code
- Nutrient translation file supports factor field after Brill code and External code to account for factoring nutrient values from one system to another.
- The same file can be used for exports and imports.
- The translation files support codes longer and alphanumeric translations where not available in Brill. For example “1234,this is a long ingredient code” or “10,this is alpha nutrient code” in the translation file is valid.
- The user can use the translation file to exclude items from the import or export.

File extensions:

- .xtp – Plant translation extension.
- .xti – Ingredient translation extension.
- .xtn- Nutrient translation extension.



- **Preview Grid**

Allows the user to preview the data selected before executing the export or import.

Options available using the right click menu:

- Copy Without Headers – This will copy the selected area of the grid to the Windows clipboard.
- Copy With Headers – This will copy the selected area of the grid and include the column headers to the Windows clipboard.
- Select Row – This will select the all the columns in the rows already selected.
- Select Column – This will select all the rows in the columns already selected.
- Select All – This will select the entire grid.

Buttons

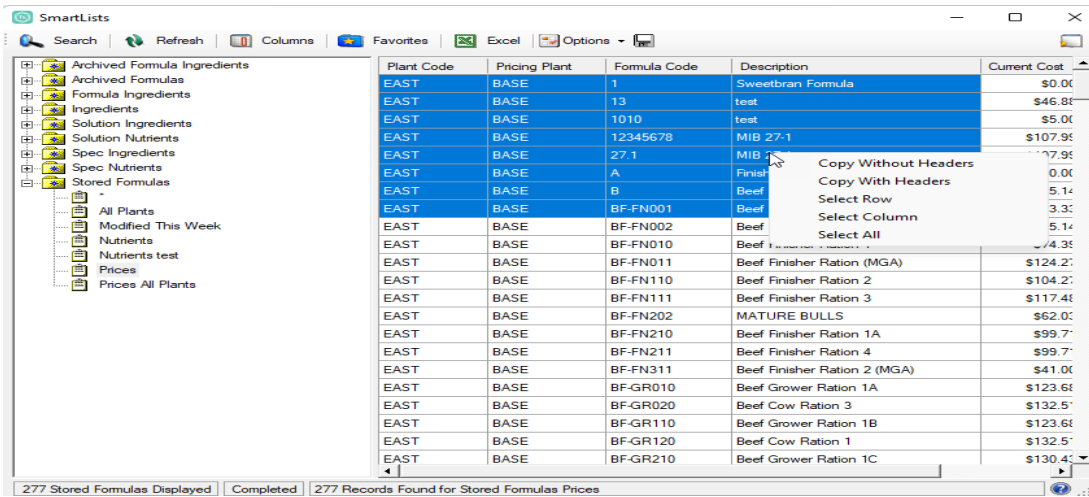
- Save – Save the option settings
- View Log- View the log file created
- Accept/Export – Accept the menu option, after preview grid is populated the button label changes to Export.
 - Export Button (When available) - Export the grid to Excel.
- Cancel – If a menu selection is taken and the review grid is shown cancels the current menu selection and clears the grid. If no grid is shown or a menu option has not been taken closes the Excel Interface and returns to Brill maintenance.



Report Enhancements

- SmartLists grid copy options enabled.** When using Smartlist reporting you cannot select part or all of the grid for copying to another program. Due to the current column headers sorting the data when the user clicks on the header there have been right click options added to allow the user to select entire rows or columns of data. After selecting the data you want to copy, use the options Copy without Headers and Copy With Headers to copy the data to the Windows clipboard.

Highlight the area you want to copy then right click in the grid to display the copy options.



Copy Without Headers – This will copy the selected area of the grid to the Windows clipboard.

Copy With Headers – This will copy the selected area of the grid and include the column headers to the Windows clipboard.

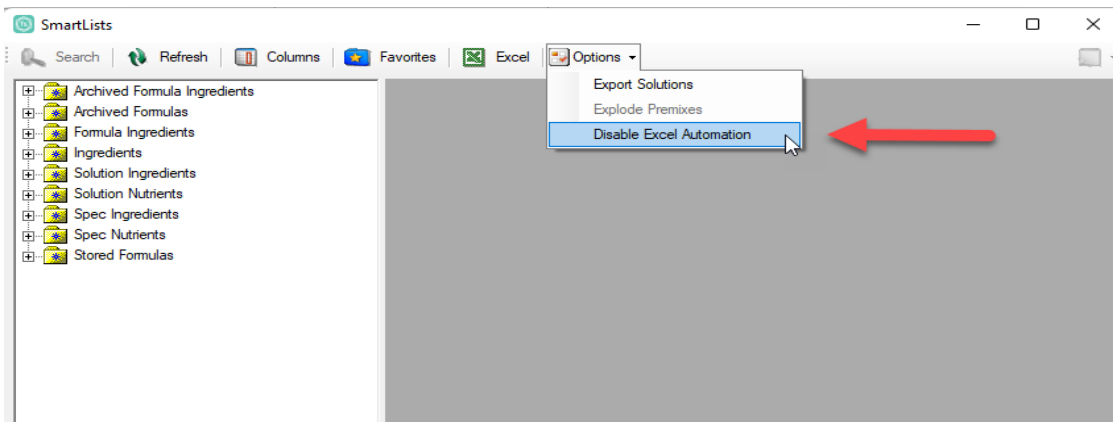
Select Row – This will select the all the columns in the rows already selected.

Select Column – This will select all the rows in the columns already selected.

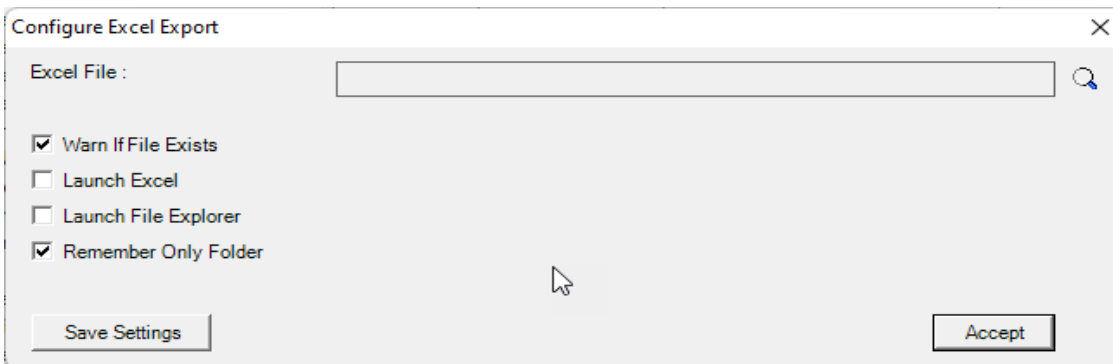
Select All – This will select the entire grid.

- **SmartLists option improved for operation for environments without Excel.** When using SmartLists on a machine without Excel installed the program would error out when trying to export to Excel. A new option has been added to use Excel without Excel automation. Online versions of Excel do not allow automation and previous worksheets created using Microsoft VBA macros will not function. When this option is set the program will create a worksheet xlsx without the Excel requirement. This allows the user to use the SmartList reports and create the Excel worksheets then view them online or copy them back to their local machine. This will also allow Brill to work with Microsoft Office Excel using the 64-bit installation.

To set this option open SmartLists and select options then Disable Excel Automation



Now after creating with data present and selecting Excel option this screen is displayed.



Excel File – Use the lookup to select a folder and name the file exported. If you select you OneDrive depending on your company settings you can then open with your Desktop or online version of Excel.

Warn if File Exists – When checked, this will prompt you to overwrite the file if it already exists.

Launch Excel – When checked, this will open the file exported.

Launch File Explorer – When checked, this will open the folder where the exported file is located. This allows the user to process the file in other steps when necessary.

Remember only Folder – When checked, this will remember the folder selected if the user has more files to process.

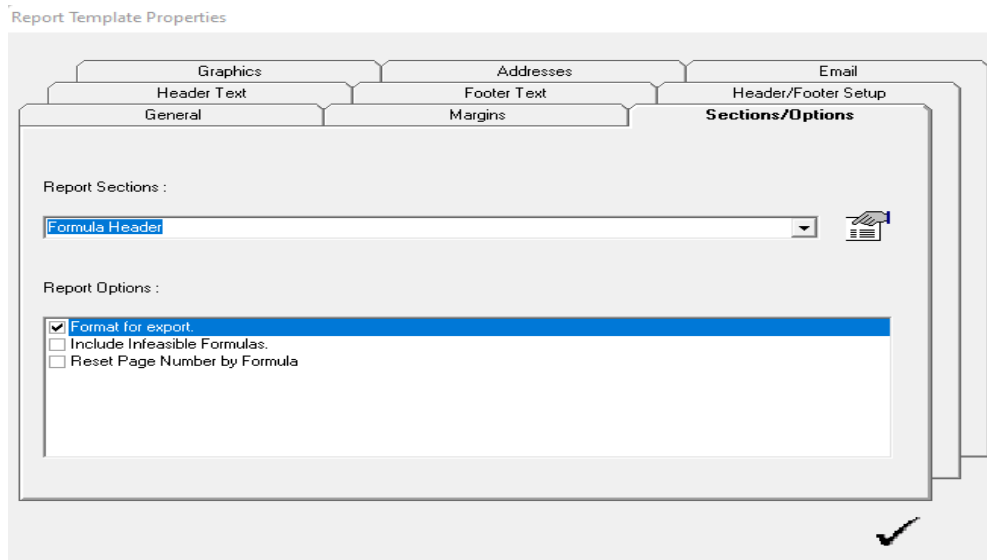
Save Settings button – This will save the checkbox settings for this form.

Accept button – This will execute the export and any other actions set with the checkboxes.

Report Enhancements

Multiple improvements were made in copying report data to the Windows clipboard and to Excel. In the report configuration an option has been added to multiple reports in maintenance and optimization to format the report for export. This option will print the headers on one line (unless the option to wrap the header is selected) and space the columns on the reports to line up better when copying the data to Excel.

When selecting report edit report template properties there is now an option in the Sections/Options tab - Report Options to Format for Export:



Note there are zeros shown in the report in some cases which can be shown in Excel as blanks using Excel options available.

Excel without the option selected:

Plant	Price									
Plant										
Formula										
Code	Name	Date								
Stored										
Prod										
Amount										
Stored										
Cost										
Solution										
Cost	Diff.	Ext.								
Diff.										
%										
Change										
BASE	EAST	BR-GR02	PULLET GROWER	#####	1	91.6258	91.626	0.0002		
Code	Name	Price	Diff.	Stored						
Amount	Cost	Solution								
Amount	Cost									
1068	Meat Meal 55%	14	41	5.74	41	5.74				
1114	Soybean Meal - 50% wo hull sol	8.95	0.0026	23.0981	2.0673	23.1007	2.0675			
1130	Wheat middlings	3.4	-0.0026	1,852.40	62.9817	1,852.40	62.9816			
2022	Dynamate	28.8	20	5.76	20	5.76				
2031	Limestone	2.05	39.6	0.8118	39.6	0.8118				
2046	Salt (Sodium Chloride)	6.3	1	0.063	1	0.063				
2701	Dairy Trace Minerals	133.15	1	1.3315	1	1.3315				
2709	Swine Vit Premix	50	2.5	1.25	2.5	1.25				
3002	Liquid Methionine - 40%	59.9	19.4	11.6206	19.4	11.6206				
Totals for all ingredients:		0.00%	2,000.00	91.6259	2,000.00	91.626				

Excel with the option selected

Plant	Price	PI	Formula	Name	Date Stored	Prod	Amount	Stored	Cost	Solution	Cos	Diff.	Ext.	Diff.	%	Change
BASE	EAST		BR-GR02	PULLET GROWER	1/25/2006	1	91.6258			91.626	0.0002	0	0			
Code	Name	Price	Diff.	Stored	Amount	Cost	Solution	Amount	Cost							
1068	Meat Meal 55%	14	0	41	5.74	41	5.74									
1114	Soybean Meal - 50% wo hull sol	8.95	0.0026	23.0981	2.0673	23.1007	2.0675									
1130	Wheat middlings	3.4	-0.0026	1,852.40	62.9817	1,852.40	62.9816									
2022	Dynamate	28.8	0	20	5.76	20	5.76									
2031	Limestone	2.05	0	39.6	0.8118	39.6	0.8118									
2046	Salt (Sodium Chloride)	6.3	0	1	0.063	1	0.063									
2701	Dairy Trace Minerals	133.15	0	1	1.3315	1	1.3315									
2709	Swine Vit Premix	50	0	2.5	1.25	2.5	1.25									
3002	Liquid Methionine - 40%	59.9	0	19.4	11.6206	19.4	11.6206									
Totals for all ingredients:					0.00%	2,000.00	91.6259	2,000.00	91.626							

Key Incident Fixes

Issue: Zen 15 (Pervasive database) has a default setting on File Close Delay of 50 milliseconds causing Brill file rebuilds to fail.
Resolution: This issue has been resolved. The fix will retry the process 5 times before failing which allows the file close delay to remain at the default

Issue: When data lock is on the database the file rebuild shows successful completion when it actually fails.
Resolution: This issue has been resolved. The log file now shows the correct messaging when data lock is present.

Previous Versions

Brill Formulation™ 2.8 (v2.08.005 – 05/2022)

Optimization Enhancements

- **Optimization grids will now keep or clear selected rows when doing right-click menu options.** If the row under the right click is in the selection, then the selection will remain until a row is clicked outside of the selection.

Brill Formulation Optimization : Demonstration Data

File Edit Reports System Custom Help

Professional Nutritionist

Ingredients for EAST / BR-ST010 Broiler Starter (med-virgin)

	Code	Name	Solution Amount %	Price *	Previous Solution
	1010	Corn Bulk	12.7500	5.0000	
	1039	Corn grain Flaked	6.0000	5.5300	
	1058	Fish Meal Menhaden	7.6695	39.7500	
	1063	Linseed Meal Flaxseed mech		8.1300	
	1113	Soybean Meal 44% Protein	40.1056	13.0000	
	1129	Wheat Bran	33.3000	6.4500	
	2015	Copper Oxide		60.0000	
	2708	Swine Trace Mineral Premix	0.0500	60.0000	
	2709	Swine Vit Premix	0.1250	50.0000	
	2710	Swine Vit-Trace Mineral Premix		200.0000	

- **Added new right-click menu option ‘Remove all non-fixed restrictions’ to ingredient grid.** This option will remove/clear the restrictions from all ingredients that are not fixed, i.e. Minimum not equal to the Maximum.

Ingredient Grid prior to the option selected.

Brill Formulation Optimization : Demonstration Data

File Edit Reports System Custom Help

Ingredients for EAST / BR-ST010 Broiler Starter (med-virgin)

Code	Name	Solution Amount %	Price *	Minimum	Maximum	Stored Amount
1010	Corn Bulk	12.7500	5.0000	3.0000		13.0000
1039	Corn grain Flaked	6.0000	5.5300	6.0000		
1058	Fish Meal Menhaden	7.6695	39.7500	1.0000	10.0000	6.8188
1063	Linseed Meal Flaxseed mech		8.1300			
1113	Soybean Meal 44% Protein	40.1056	13.0000			41.7562
1129	Wheat Bran	33.3000	6.4500			38.2500
2015	Copper Oxide		60.0000			
2708	Swine Trace Mineral Premix	0.0500	60.0000	0.0500	0.0500	0.0500
2709	Swine Vit Premix	0.1250	50.0000	0.1250	0.1250	0.1250
2710	Swine Vit-Trace Mineral Premix		200.0000			

Ingredient Grid after “Remove all non-fixed restrictions” is taken.

Brill Formulation Optimization : Demonstration Data

File Edit Reports System Custom Help

Restrictions Cleared

Ingredients for EAST / BR-ST010 Broiler Starter (med-virgin)

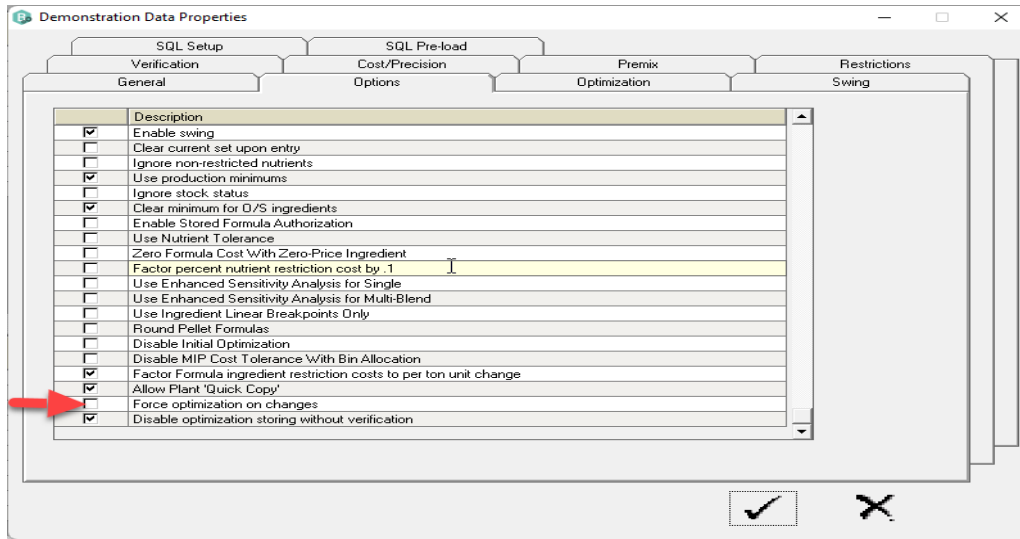
Code	Name	Solution Amount %	Price *	Minimum	Maximum	Stored Amount
1010	Corn Bulk	12.7500	5.0000			13.0000
1039	Corn grain Flaked	6.0000	5.5300			
1058	Fish Meal Menhaden	7.6695	39.7500			6.8188
1063	Linseed Meal Flaxseed mech		8.1300			
1113	Soybean Meal 44% Protein	40.1056	13.0000			41.7562
1129	Wheat Bran	33.3000	6.4500			38.2500
2015	Copper Oxide		60.0000			
2708	Swine Trace Mineral Premix	0.0500	60.0000	0.0500	0.0500	0.0500
2709	Swine Vit Premix	0.1250	50.0000	0.1250	0.1250	0.1250
2710	Swine Vit-Trace Mineral Premix		200.0000			

- The right-click option on the ingredient grid “Change Stock Option” will now function on all highlighted rows instead of only the current row in optimization.
- The right-click options on the ingredient grid to enable/disable ingredient options will now function on all highlighted rows instead of only the current row in optimization.

- **A new option 'Force optimization on changes' has been added.** This option forces the user to optimize on every formula ingredient change to the minimum or maximum. Users will only be able to change one formula ingredient at a time without running optimization. Only the formula ingredient minimum and maximum are affected by this option being turned on.

An option in foundation utilities has been added to enable this function.

Open foundation utilities and select File-> Edit Database configuration-> Option tab scroll to the bottom of the screen and click on the option to enable the function.



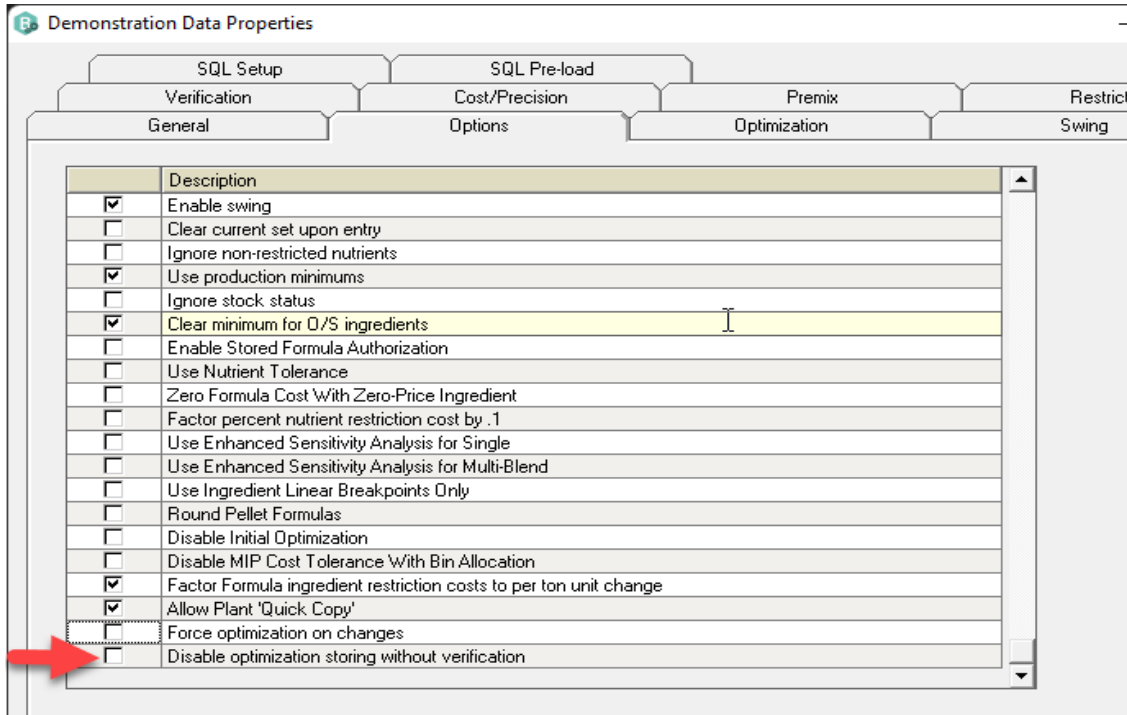
Once this option is set if a user makes a change to the ingredient minimum or maximum on an ingredient optimization must take place before another change can take place. In the example below, the maximum on 1010 Corn Bulk was changed. If the user tries to make another change before optimizing a message box will display. (Changed 1039 Corn grain Flaked to 10)

Code	Name	Solution Amount %	Price *	Previous Solution	Minimum	Maximum	Stored Amount	Low Cost	Solution Difference	Low Amount	High Cost	High Amount	Rest Cost	UnRounded Amount	UnRounded Previous
1010	Corn Bulk	12.7500	5.0000	5.0000	3.0000	15.0000	13.0000	3.9447	7.7500	26.4138	54.1765	11.9644		12.7670	5.0000
1029	Corn grain Flaked	6.0000	5.5300	6.0000	6.0000	10		3.4428		22.4381	5.5300	6.0000	0.0209	6.0000	6.0000
1058	Fish Meal Menhaden	7.6895	39.7500	10.0000	1.0000	10.0000	6.8188	29.4957	-2.3305	11.2301	59.808.9500	4.1914		7.6895	10.0000
1063	Linseed Meal Flaxseed meal		8.1300		18.0787				-18.0787		14.4837				18.0787
1113	Soybean Meal 44% Protein	40.1056	13.0000	43.6230			41.7962	4.2833	-3.5175	71.7887	19.5777	34.0860		40.0964	43.6230
1129	Wheat Bran	33.3000	6.4500	17.1233			38.2500		16.1767	37.7646	7.5467	11.5013		33.2822	17.1233
2015	Copper Oxide		60.0000								13.8513				
2708	Swine Trace Mineral Premix	0.0500	60.0000	0.0500	0.0500	0.0500	0.0500	60.0000		0.0500	60.0000	0.0500		0.0500	0.0500
2709	Swine Vit Premix	0.1250	50.0000	0.1250	0.1250	0.1250	0.1250	50.0000		0.1250	50.0000	0.1250		0.1250	0.1250
2710	Swine Vit-Trace Mineral Premix		200.0000								13.8513				

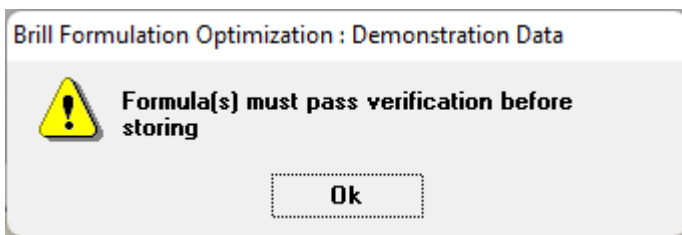
- **A new option 'Disable optimization storing without verification' has been added.** When using the buffer, multi-formula, or multi-blend, the new option requires the 'Optimize and Verify Set' be used and all formulas to pass verification before formulas or solutions can be stored or Make a Premix. This option does not affect batch optimization or the maintenance module.

An option in foundation utilities has been added to enable this function.

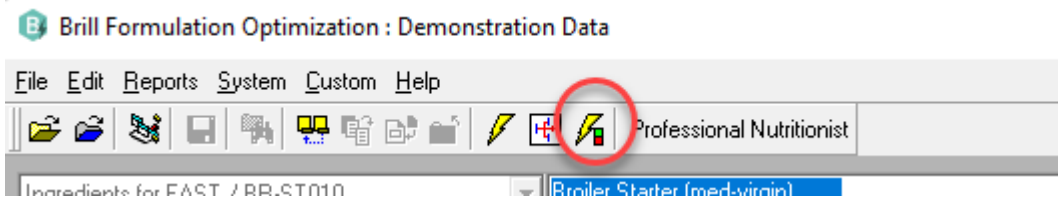
Open foundation utilities and select File-> Edit Database configuration-> Option tab scroll to the bottom of the screen and click on the option to enable the function.



When this option is set optimization with verification must be used before the user can store the results from optimization. If the user tries to store the solution without running verification this error will appear.

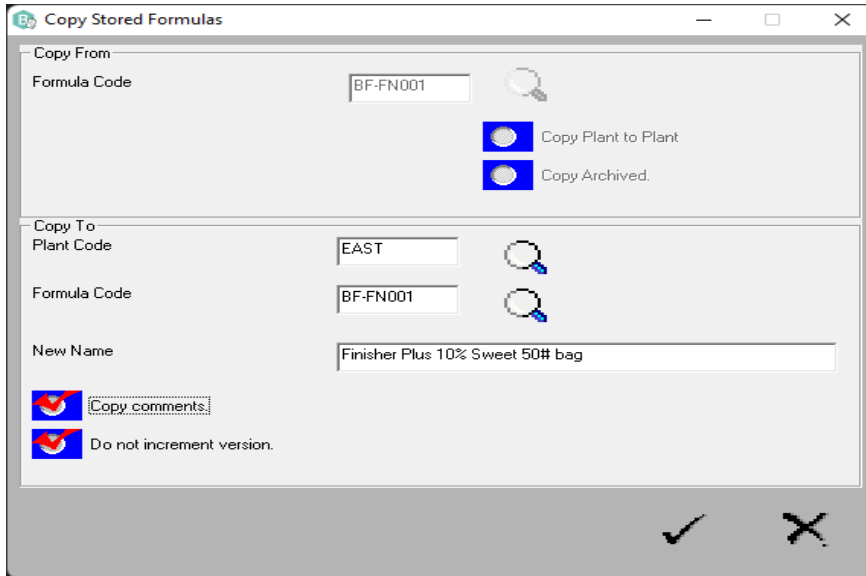


To store the formulas, the user must use the Optimization with Verification.

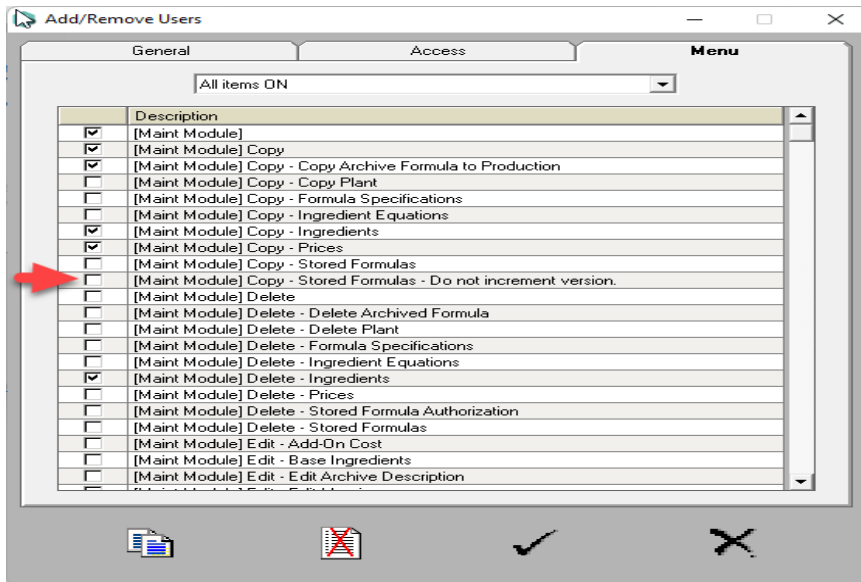


Maintenance Enhancements.

- **A new option, 'Do not increment version', has been added to the stored formula copy.** When checked, the destination stored formula will keep the original version. The stored date will continue to be updated as usual.

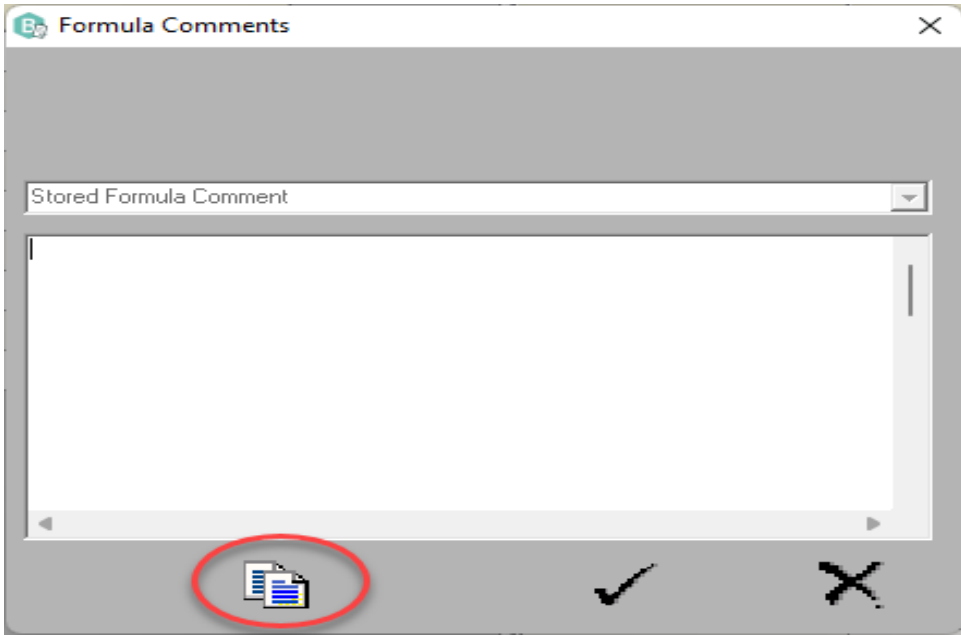


Foundation Utilities has a new menu security option '[Maint Module] Copy - Stored Formulas - Do not increment version.' available secure this option by user or by group.

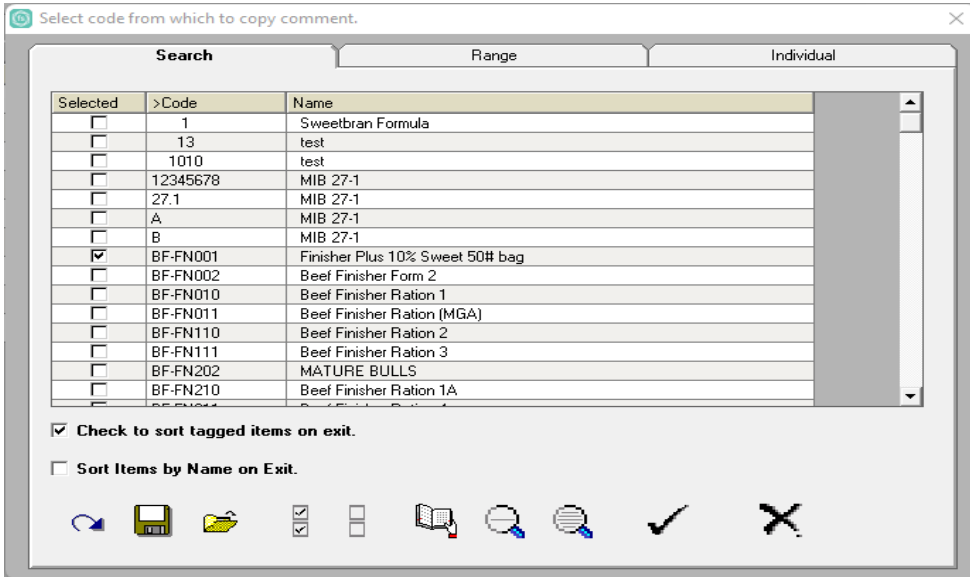


When this option is used the stored formula is copied then the formula at the target site retains the version number of the source formula. If the formula does not exist, then the target formula retains the source formula version. If the formula code exists at the target plant the copied version overwrites the version of the formula at the target site and makes this version the production formula.

- An option has been added to comment maintenance forms appearing in formulas, specifications and mill mix to allow copying the comments from another code.



Selecting this option will allow the user to select from a list of formulas (standard Brill lookup)



Selecting the from this screen and pressing the check mark will copy the information from the selected code into the comment area of the item being worked on. If the information is not what the user expected selecting another code or using the X will cancel the operation otherwise the checkmark on the comment form will accept the information. After the user selects the checkmark on the comment form the user will also need to use the checkmark on the main form to save the data and have the updated comment appear.

- **An option has added to allow the user to copy archived formulas to another plant/code.**

When selecting this option, the lookup for in the “Copy From” portion of the form will display the standard Brill formula code lookup. This then is followed by the lookup of the archived version of the formula:

Ver	Description	Date
<input checked="" type="checkbox"/> 84 P	Finisher Plus 10% Sweet 50# bag	7/23/2019 08:44
<input type="checkbox"/> 83 R	Finisher Plus 10% Sweet 50# bag	3/23/2018 10:11
<input type="checkbox"/> 82 R	Finisher Plus 10% Sweet 50# bag	11/22/2017 14:53
<input type="checkbox"/> 81 R	Finisher Plus 10% Sweet 50# bag	11/20/2017 14:24
<input type="checkbox"/> 10 R	Finisher Plus 10% Sweet 50# bag	2/10/2017 09:15
<input type="checkbox"/> 9 R	Finisher Plus 10% Sweet 50# bag	2/10/2017 09:07
<input type="checkbox"/> 8 R	Finisher Plus 10% Sweet 50# bag	2/10/2017 08:29
<input type="checkbox"/> 7 R	Finisher Plus 10% Sweet 50# bag	10/31/2016 16:10
<input type="checkbox"/> 6 R	Finisher Plus 10% Sweet 50# bag	10/31/2016 16:09
<input type="checkbox"/> 5 R	Finisher Plus 10% Sweet 50# bag	3/7/2016 15:08
<input type="checkbox"/> 4 R	Finisher Plus 10% Sweet 50# bag	3/7/2016 15:08
<input type="checkbox"/> 80 R	Finisher Plus 10% Sweet 50# bagzz	12/20/2013 10:11
<input type="checkbox"/> 3 R	Finisher Plus 10% Sweet 50# bag	9/7/2007 10:02
<input type="checkbox"/> 2 R	Finisher Plus 10% Sweet 50# bag	2/1/2006 17:04
<input type="checkbox"/> 1 R	Finisher Plus 10% Sweet 50# bag	2/1/2006 17:03

- **A minor correction was made to the menu option Edit Archive Comments to Edit Archive Description to reflect what the option changes.**

Report Enhancements

- A new option “Format header for export” has been added to the “Where Used” and the “Stored Formula” reports.** When headers with multiple lined column headers were exported to a text file or copied to the clip board, the formatting of the report was lost. This option exports the column header in a single line to keep the formatting of the report. Note the user will have to adjust column widths of the reports to get the export needed. The user will want to configure and save multiple report templates for exports or viewing/printing reports.

Example: Where used report formatted for export, columns widths expanded for Min and Max values.

Where Used Report Page : 1

Column width expanded to 1.4 inches to hold header

Plant	Code	Description	1010 Corn Bulk Min	1010 Corn Bulk Max
EAST	BF-FN0	Finisher Plus 10% Sweet 50	0.3000	0.3000
EAST	BFXFN	Finisher Plus 10% Sweet 50	0.3000	0.3000
EAST	BR-FN	Broiler Finisher Form 1	4.0000	4.0000
EAST	BR-FN	Broiler Finisher Form 2	4.0000	4.0000
EAST	BR-FN	Broiler Finisher Form 3	4.0000	4.0000
EAST	BR-ST0	Broiler Starter (med-virgin)	3.0000	
EAST	BRXFN	Broiler Finisher Form 1	4.0000	4.0000
EAST	BRXFN	Broiler Finisher Form 2	4.0000	4.0000
EAST	BRXFN	Broiler Finisher Form 3	4.0000	4.0000
EAST	CU-000	Broiler Premix A for Breakth	0.6000	0.6000
EAST	CUX00	Broiler Premix A for Breakth	0.6000	0.6000
EAST	DU-ST	DUCK STARTER	35.0000	96.0000
EAST	DU-ST	DUCK STARTER 2	35.0000	96.0000
EAST	DUXST	DUCK STARTER	35.0000	96.0000

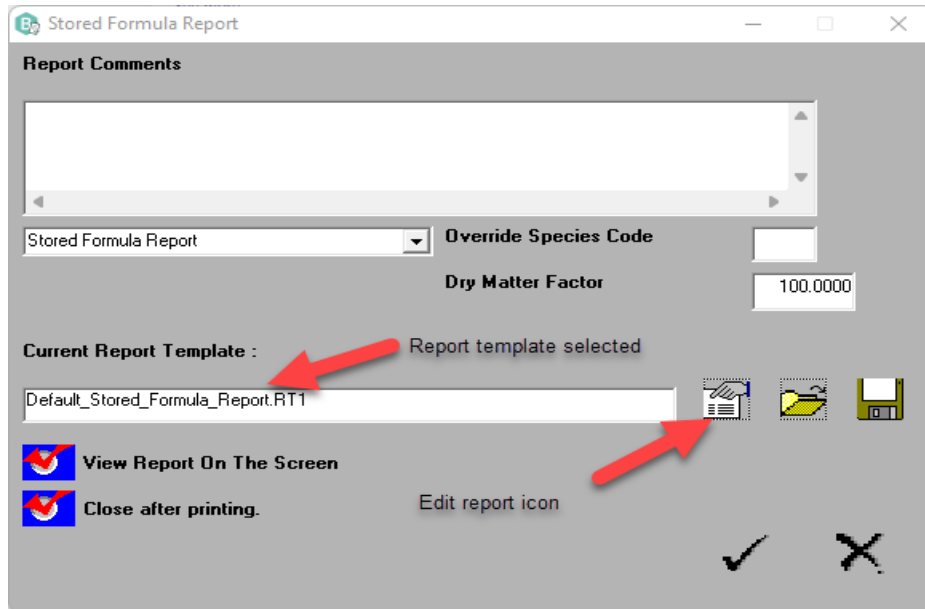
Report copied to clipboard and pasted to Excel

	A	B	C	D	E	F	G	H
1	Plant	Code	Description	1010 Corn Bulk M	1010 Corn Bulk M			
2	EAST	BF-FN0	Finisher Plus 10% Sweet 50	0.3	0.3			
3	EAST	BFXFN	Finisher Plus 10% Sweet 50	0.3	0.3			
4	EAST	BR-FN	Broiler Finisher Form 1	4	4			
5	EAST	BR-FN	Broiler Finisher Form 2	4	4			
6	EAST	BR-FN	Broiler Finisher Form 3	4	4			
7	EAST	BR-ST0	Broiler Starter (med-virgin)	3				
8	EAST	BRXFN	Broiler Finisher Form 1	4	4			
9	EAST	BRXFN	Broiler Finisher Form 2	4	4			
10	EAST	BRXFN	Broiler Finisher Form 3	4	4			
11	EAST	CU-000	Broiler Premix A for Breakth	0.6	0.6			
12	EAST	CUX00	Broiler Premix A for Breakth	0.6	0.6			

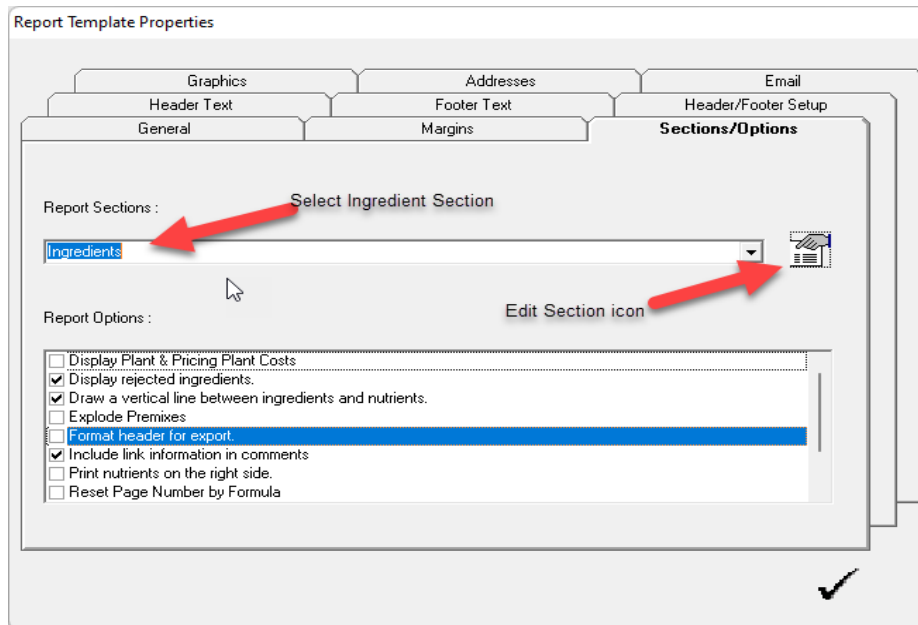
- A new column has been added to the ingredient section of the “Stored Formula” and “Formula Specifications” report In Maintenance to display associated formula premix code of ingredients.
- A new column has been added to the ingredient and rejected ingredients sections of the “Solution Report” In Optimization to display premix code of the associated ingredients.

This column must be turned on for the reports and column width accounted for when printing the reports.

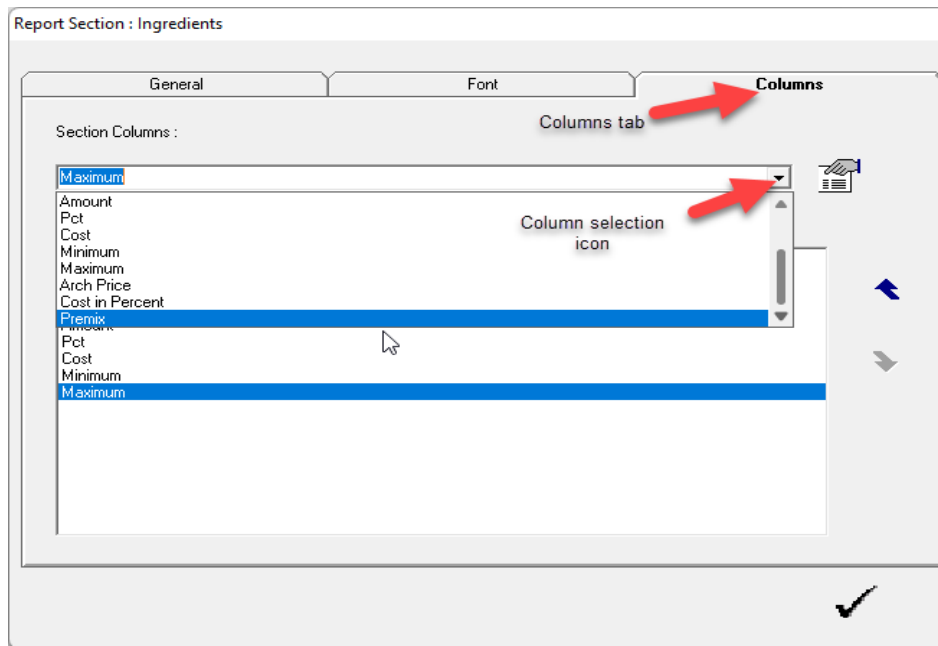
To display the column in the report, select Reports -> “Report you want to change”. For this example, “Stored Formula” in maintenance is used. To add a new column to the report, use the edit report template icon to access the properties of the report.



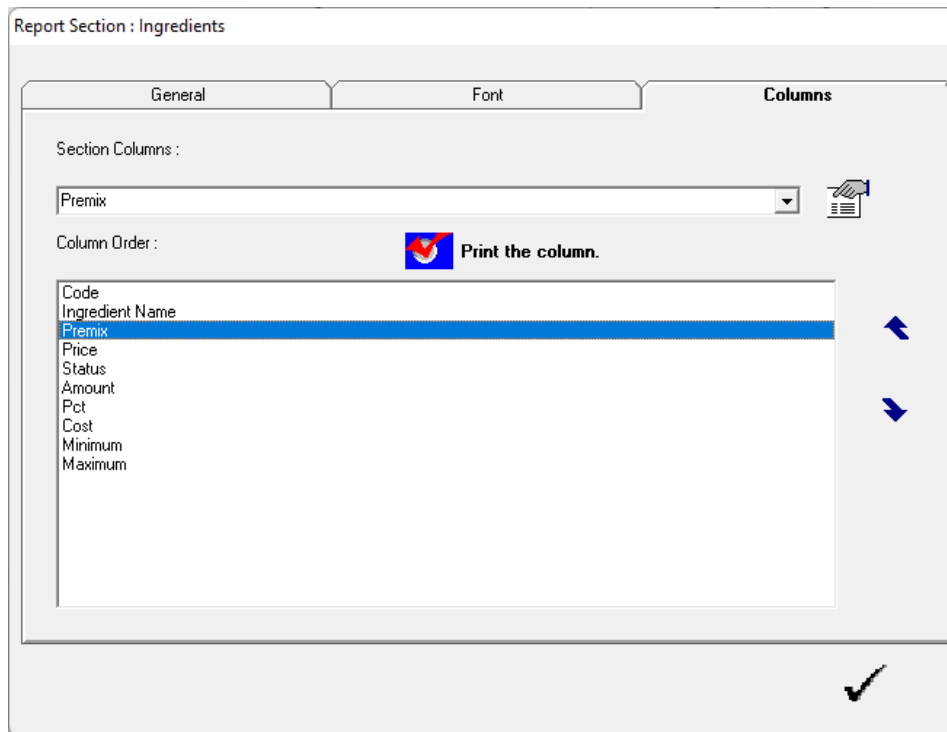
Select the ingredients section on the Sections/Options tab, then select the edit section icon.



Select the column tab, then use the drop down to select the Premix column



With the Premix column selected, turn on the column by selecting Print the Column. The user can also adjust where on the report the column prints, in this example it prints after the ingredient name.



Use the checkmarks to return to the report selection screen and save your changes to the existing report or create another report template by changing the name.

Example Stored formula with premix column added:

Steve Vagle
Stored Formula Report
Plant : EAST - FS Production Plant East
Pricing Plant: BASE - FS Base Plant

Page : 1

Formula Code	Description	Species Code	Batch Weight	Date Stored	Ver	Stored Cost	Current Cost	% Chg
BF-FN110	Beef Finisher Ration 2	1	6000.00	5/5/2022	19	102.9035	102.9035	
Code	Ingredient Name	Price	Premix	Amount	Pct	Cost	Minimum	Maximum
1010	Corn Bulk	5.0000		5,754.1110	95.90	287.7055		
2046	Salt (Sodium Chloride)	6.3000		70.5200	1.18	4.4428	2.4300	2.4300
PREMI	Premix for demo	3.1250	BF-FN001	50.0000	0.83	1.5625		
2031	Limestone	2.0500		43.8210	0.73	0.8983	1.5100	1.5100
1017	Blood Meal	21.0000		29.0208	0.48	6.0944		
1054	Fat Animal Hydrolyzed	3.1000		27.5695	0.46	0.8547	0.9500	0.9500
1124	Urea 45% Nitrogen	32.5000		18.2830	0.30	5.9420	0.6300	0.6300
2022	Dynamate	28.8000		3.4825	0.06	1.0030	0.1200	0.1200
2003	Ammonium Sulphate	6.5000		3.1923	0.05	0.2075	0.1100	0.1100
No	Nutrient Name	Units	Actual	Dry Matter	Minimum	Maximum		
1	Weight	Lbs	1.0000	1.0000	1.0000	1.0000		
2	Dry Matter	%	88.2745	100.0000				
3	Moisture	%	11.7255					
4	TDN	%	79.3565	89.8975				
5	Digestible Energy	Mcal/lb	1.6030	1.8153				

Brill Formulation™ 2.8 (v2.08.004 – 03/2020)

Key Incident Fixes

- Issue:** Under some circumstances, after Move Archive to Production, 1 or more ingredients will disappear or may even change to another ingredient. This seems random.
- Resolution:** This issue has been resolved. The fix will not correct the stored formula. The formula must be moved again from archive to production to correct the issue.
- Issue:** When you move a formula from archive to production and that formula has a link, then the linked formula does get created, but we do not have an archived 'P' version of that formula.
- Resolution:** This issue has been resolved.
- Issue:** dBC Batch Interface - Ingredient Group Number above 9 is not being recognized by dBC
- Resolution:** This issue has been resolved.

Brill Formulation™ 2.8 (v2.08.003 – 04/2019)

Enhancements

Mill Mix Report – Modified Cost Field Added

A new column is available on the formula header of the mill report called 'Mill Cost'. This new column will recalculate the formula cost after applying rounding and ingredient splitting as opposed to the 'Current Cost' which is the cost of the original stored formula.

Plant Maintenance - Premix Plant Support

A new field 'Premix Plant' is available for each plant. When a premix is exploded or expanded, the current plant is searched for the corresponding stored formula. If the formula is not found in the current plant, then the premix plant, if specified, is searched. The premix plant allows for centralizing premix formulas and adds equivalent functionality to the premix plant in Feed Tags.

The screenshot shows a 'Plant Maintenance' dialog box with the following fields and values:

- Plant Code : MKT
- Plant Name : Demo System Plant
- Virtual Base Name :
- Alternate Plant :
- Premix Plant : PREM1

A green arrow points to the 'Premix Plant' field. At the bottom right, there are checkmark and 'X' icons.

Key Incident Fixes

Issue:	The Ingredient Partial Nutrient Import Randomly Shows Ingredient Not Found.
Resolution:	This issue has been resolved.